



April 28, 2025

USED & STOCK EQUIPMENT

Biglerville, PA • 800-345-3546 | Bellevue, OH • 800-848-8460 | Sikeston, MO • 573-475-9496

SPRAYERS



\$49,500

2012 AGCO Rogator 1100, 5049 hours, AGCO Power T4 8.4L 370 hp diesel engine, 1100 gal. SS tank, 100 ft booms with SS boom lines, 10 in. nozzle spacing, 5-way nozzles body, 7-section shutoff valve, Raven Viper Pro, AutoSteer, AccuBoom, A/C, AM/FM radio, air ride seat, 380/90R46 tires (30% remains).

SN: AGCA1100PCNSL1037 (OH) **U1545**



\$72,500

2013 Case IH Patriot 3330, 4025 hrs., Fiat 6.7L 285 hp diesel engine, hydrostatic trans., 1000 gal. SS tank, 90 ft. booms with 20 in. nozzle spacing, single body nozzles, SS chemical eductor, Trimble FMX2000 controller, AutoSteer, Auto shut-offs, AIM Command nozzle control, A/C, AM/FM radio, air ride seat, fenders, 380/90R46 Firestone tires (70% remains).

SN: YDT036007 (PA) **U1623**



\$125,000

2016 Peterbilt Stahly PB348, 1679 hours, 11,429 miles, Peterbilt chassis, PX-9 350 hp diesel engine, automatic trans., 1450 gal. SS tank, 80 ft booms with SS boom lines, 20 in. nozzle spacing, 5-section shutoff valve, 5-body nozzles, Raven Viper 4 controller, foam marker, AM/FM, A/C, air ride seat, fenders, front 48x25.00-20 Michelin (80% remains) rear 66x43.00-25 Alliance tires (70% remains). Includes set of row crop tires (90% remains). Excellent Condition!

SN: 2NP3HJ8X0GM352451 (Belleville, PA) **Brokered**



\$9,350

2011 GVM Spray Rig 1450, 1450 gal. SS tank, 90/70 ft booms with SS boom lines, 30 in. nozzle spacing, 5-section shutoff valve, triple body nozzles, 5 section shutoff valve, Raven Accuboom and Raven Autoboom, 3 sensors.

SN: SR-111450CB1018 (PA) **U1583A**



\$59,500

2012 GVM 9275 Prowler, 5921 hours, Cummins QSB6.7L 275 hp diesel engine, Funk 10-speed powershift trans., 114 in Axletech axles, 1600 gal. SS tank, 70/90 ft booms with SS boom lines, 15 in. nozzle spacing, 5-section shutoff valve, triple body nozzles, Raven Envio Pro, Accuboom, A/C, AM/FM radio, air ride seat, 380/90R46 row crop tires (30% remains). Floaters not included.

SN: RC-119909T1079 (OH) **U1618**

SPRAYERS



\$85,000

2012 GVM E275 Prowler, 3727 hours, Cummins QSB6.7 275 hp diesel engine, auto. ZF WG210 powershift trans. reman 07/2023, 120 in. axles, 1600 gallon SS tank, 60/80 ft booms with SS boom lines, 30 in. on-center nozzle spacing, 5-way nozzle bodies, 5 section shutoff valve, Raven Viper Pro, AutoSteer, AccuBoom, lightbar, foam marker, SS chemical eductor, RGL 600 Light Bar, A/C, AM/FM radio, air ride seat, 380/90R46 Goodyear row crop tires (40% remains).

SN: CS-12275IX1005 (PA) **U1559, U1629**



\$75,000

2013 GVM E370 Prowler, 5335 hrs., Cummins QSL8.9 370 hp diesel engine, Funk DF250 auto. trans., 114 in. axles, 1800-gallon SS tank, 100-gallon freshwater tank, 100 ft booms with SS boom lines, 20 in. nozzle spacing, 5-way body nozzles, 9-section shutoff, parallel swathing, Ag Leader InCommand 800, AutoSteer, Greentronics Auto-Boom, combo ready, A/C, AM/FM radio, air ride seat, Spraymax 380/90R46 tires (95% remains). Well-maintained machine.

SN: CS-13114XI1028 (Whiteford, MD) **Brokered**



\$65,000

2014 GVM 9275 Prowler, 6649 hrs., Cummins QSB6.7L 275 hp diesel engine, Funk 10-speed powershift trans., 1450 gal. SS tank, 70/90 ft booms with SS boom lines, 15 in. nozzle spacing, 5-section shutoff valve, triple body nozzles, Raven Viper 4+, parallel swathing, SmarTrax AutoSteer, AutoBoom, AccuBoom, Raven chemical injection, A/C, AM/FM radio, air ride seat, 380/90R46 Trelleborg tires (30% remains).

SN: RC-149909T1121 (PA) **U1584**

COMBO



\$80,000

2010 GVM 9275 Prowler, 3705 hours, Cummins QSB6.7, 275 hp diesel engine, auto. Funk 10-speed trans., GVM Double Duty 9.5-ton spreader, roll tarp, 1450 gallon SS tank, 60/80 ft booms with SS boom lines, 30 in. on-center nozzle spacing, 5-way nozzle bodies, 5 section shutoff valve, Raven Viper Pro, AutoSteer, AccuBoom, lightbar, foam marker, SS chemical eductor, fenders, A/C, AM/FM radio, 380/90R46 tires (50% remains).

SN: RC-101149T1174 (PA) **U1628**

SPREADERS



\$5,000

2017 Case Flex-Air 810, air body 2-bin spreader, 70 ft booms Raven Accuboom and Raven Autoboom.

SN: YCT033742 (PA) **U1624A**



\$5,000

2012 New Leader 5 ft MultiApplier, 102 in. flare insert, fits in L3220G4, L4000G4 spreader boxes.

SN: 124243 (PA) **U1559C**



\$5,000

GVM Double Duty 7 ft insert, fusion ready, fits in GVM Double Duty 8-, 9.5-, and 11-ton spreader boxes.

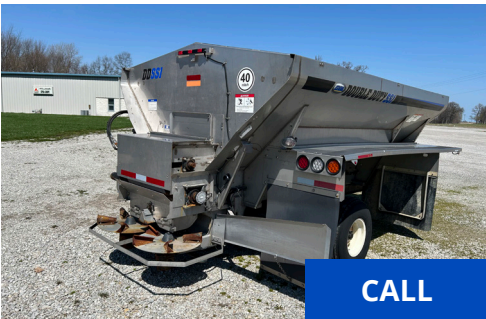
SN: 504531 (PA) **U1636**



\$39,900

2015 GVM 8.0T Double Duty FR Pull Spreader, 409 SS GVM Double Duty 8.0-ton 10 ft. spreader body, fusion ready, Raven ISObus compatible with any VT terminal, 10 ft x 102 in. wide, 250 ft³ capacity, Cable-Lok roll tarp, 120 in. track frame assembly, (2) 380/95R46 Trelleborg tires (70% remains), includes Scale-Tec (4) load cell system with monitor.

SN: PS-1580TF1003 (OH) **U1561**



CALL

2021 GVM Double Duty SS1, 11 ton, 13 ft x 102 in. wide, 330 ft³ capacity, 304 SS cross member and mounts, peaked end plates, PWM valves with RCM ISO spinner and drag controls, Heavy Bulk Standard Rotation spinners, 34 in. #3 conveyor chain with wiper, rate sensor, bulkhead window, 304 SS frame cover, 124 in. float fenders, and rear camera.

SN: DD-21110SCS1017 (Bellevue, OH) **Brokered**



\$55,000

2025 GVM Double Duty TR2, 11 ton, 13 ft x 102 in., 330 cu. ft. capacity, designed for lime and fertilizer spreading, 304 SS cross member and mount, peaked end plates, PWM valves with RCM ISO spinner and drag controls, Reverse Rotation spinners, twin 16 in. #3 conveyor chain with wiper, dual conveyor rate sensors and bulkhead window, 304 SS frame cover, 124 in. float fenders, and rear camera.

SN: DD-24110TCR1057 (PA) **U1632**



\$115,000

2015 GVM E325 Prowler, 3996 hrs., Cummins QSL 8.9L 325 hp diesel engine, 1010 ft-lb torque, auto. ZF WG 210 6-speed powershift trans, 99 in. axles, variable coil spring suspension, combo ready, GVM Double Duty 11.0T spreader body, bin level sensor, rear camera, Raven Viper Pro, reverse pitch fan, A/C, AM/FM radio, air ride seat, Firestone 380/90R46 tires.

SN: CS-15325NT1004 (PA) **U1572**



\$99,500

2017 GVM E330AA Prowler, 5218 hrs., Cummins Tier 3 QSL 9L 330 hp turbo diesel engine, Funk DF250 11-speed powershift trans., 93-120 in wheel spacing, Dromos adjustable axles, 409 SS New Leader L4000G4 10-ton spreader, Raven Viper Pro, SmarTraxx, A/C, AM/FM radio, air ride seat, beacon lights, CleanFix fan, Firestone VF380/90R46 tires (40% remains).

SN: CS-17330AA1008 (PA) **U1580**



2017 GVM E330WT Prowler, 4796 Cummins Tier 3 QSL 9L 330 hp turbo diesel engine, Funk DF250 11-speed powershift trans., AxleTech axles - 114 in. wide track, combo ready, 304 SS New Leader L4000G4 10-ton spreader with 5 ft. multiplier insert, Ag Leader InCommand 1200 controller AutoSwath w/ 6500 GPS receiver, Ag Leader SteerCommand, A/C, AM/FM radio, air ride seat, dual beacon amber lights, reverse pitch programmable fan, electric roll tarp, fenders, 380/105R50 Goodyear tires (60% remains).

SN: CS-17330XI1023 (OH) **U1609**



2019 GVM T380 Prowler, 2680 hrs., Cummins QSL9 380 hp turbo diesel engine, Funk DF250 4x4 powershift 11-speed auto. trans., Dromos fixed axles, 2WS, sprayer combo joystick, reverse pitch fan, 304SS GVM 11.0T Double Duty spreader body, bulkhead window, Raven Viper 4 with RS-1 ISO steering receiver, A/C, AM/FM/BT radio, air ride seat, electric roll tarp, front and rear fenders, 380/90R46 Goodyear tires (60% remains).

SN: CS-193802WT1028 (OH) **U1625**



2020 GVM T380 Prowler, 1961 hrs., Cummins QSL9 380 hp turbo diesel engine, Funk DF250 4x4 powershift 11-speed auto. trans., Dromos adjustable axles rated @ 34,000 lb., 4WS, sprayer combo joystick, reverse pitch fan, 304SS GVM 11.0T Double Duty TR4 spreader body with reverse rotating spinners, 4-section shutoff, bulkhead window, Raven Viper 4 with RS-1 ISO steering receiver, A/C, AM/FM/BT radio, air ride seat, window tint, electric roll tarp, front fenders, 480/80R50 Alliance tires. EPG warranty options available.

SN: CS-20380XAA1044 (OH) **U1528**



2021 GVM T380 Prowler, 1419 hrs., Cummins QSL9 380 hp turbo diesel engine, Funk DF250 4x4 powershift 11-speed auto. trans., Dromos wide track adjustable axles, 173 in. wheelbase, 4WS, reverse pitch fan, 304SS GVM 11.0T Double Duty SS1 spreader body with heavy bulk standard rotating spinners, bulkhead window, Raven Viper 4 with RS-1 ISO steering receiver, Slingshot unlock, Raven RGL 600 Light Bar, A/C, AM/FM/BT radio, air ride seat, window tint, electric roll tarp, rear camera and 2 extra, fenders, 480/95R50 Alliance row crop tires. EPG warranty options available.

SN: CS-21380XAA1060 (MO) **U1589**



2021 GVM T325 Prowler, 3600 hrs., Cummins B6.7L 325 hp turbo diesel engine, Funk DF250 4x4 powershift 11-speed auto. trans., adjustable axles, 4WS, 304SS GVM 11.0T Double Duty SS1 spreader body, 1-section shutoff, bulkhead window, 124 in. fenders, Raven Viper 4+ with RS-1 ISO steering receiver, RGL 600 light bar, A/C, AM/FM/BT radio, air ride seat, window tint, roll tarp, 380/90R46 row crop tires (35% remains). Includes set of 650/75R32 floater tires (60% remains) and EPG Warranty options available.

SN: CS-213254AA1062 (PA) **U1607**



2022 GVM T325 Prowler, 667 hrs., Cummins B6.7L 325 hp turbo diesel engine, Dana HVT-R2 trans., adjustable axles, 4WS, 304SS GVM 11.0T Double Duty TS2 spreader body, 2-section shutoff, bulkhead window, 124 in. fenders, Raven Viper 4+ with RS-1 ISO steering receiver, RGL 600 light bar, A/C, AM/FM/BT radio, air ride seat, window tint, roll tarp, 380/90R46 row crop tires (60% remains). Includes remainder of 3-yr/3000 hrs. EPG Premier Warranty.

SN: CS-223254AA1078 (PA) **U1608**

PHOTO
COMING
SOON

\$304,000

2022 GVM T380 Prowler, XXX hrs., Cummins QSL9 380 hp turbo diesel engine, Dana HVT-R2 trans., adjustable axles, 2WS, 304SS GVM 11.0T Double Duty SR1 spreader body with reverse rotating spinners, 1-section shutoff, bulkhead window, 124 in. float fenders, Raven Viper 4 with RS-1 ISO steering receiver, Slingshot Unlock, A/C, AM/FM/BT radio, air ride seat, roll tarp, front fenders, window tint, Trelleborg 380/105R50 row crop tires (80% remains). Includes remainder of 3-yr/3000 hrs. EPG Premier Warranty

SN: CS-23802AA1073 (PA) **U1635**



\$299,500

2022 GVM T325 Prowler, 595 hrs., Cummins B6.7L 325 hp turbo diesel engine, Dana HVT-R2 trans., adjustable axles, 2WS, 304SS GVM 11.0T Double Duty SS1 spreader body with belt over chain, 1-section shutoff, bulkhead window, 124 in. fenders, Raven Viper 4+ with RS-1 ISO steering receiver, Slingshot Unlock, LED lights, rear camera, A/C, AM/FM/BT radio, air ride seat, window tint, heated electric mirrors, SS tool cabinet, SS pressure washer cabinet, electric roll tarp, Trelleborg 380/105R50 row crop tires (90% remains). Includes remainder of 3-yr/3000 hrs. EPG Premier Warranty.

SN: CS-223252AA1079 (PA) **U1634**

PHOTO
COMING
SOON

\$340,000

2022 GVM T380 Prowler, 500 hrs., Cummins QSL9 380 hp turbo diesel engine, Funk DF250 4x4 powershift 11-speed auto. trans., Meritor axles, 2WS, 380/90R46 row crop tires (80% remains). Includes remainder of 5-yr/3000 hrs. EPG Premier Warranty. **CHASSIS ONLY.**

SN: CS-223802WT1082 (PA) **U1582**



\$310,000

2023 GVM T380 Prowler, 635 hrs., Cummins QSL9 380 hp turbo diesel engine, Dana HVT-R2 trans., Dromos axles rated @ 32,000 lb., 4WS, 304SS GVM 11.0T Double Duty TR2 spreader body with reverse rotating spinners, 2-section shutoff, bulkhead window, 124 in. float fenders, Raven Viper 4 with RS-1 ISO steering receiver, A/C, AM/FM/BT radio, air ride seat, roll tarp, front fenders, window tint, AgCam camera, 380/90R46 row crop tires (75% remains). Includes remainder of 3-yr/3000 hrs. EPG Premier Warranty.

SN: CS-233804WT1088 (PA) **U1594**



\$70,000

2014 Rogator RG1300, 2796 hours, AGCO 8.4L 330 hp turbo diesel engine, 4WS, painted 409 SS New Leader L4258G4, Raven Viper Pro, Phoenix 300 GPS, parallel swathing, air ride seat, A/C, beacon lights, fenders, electric roll tarp, Michelin 380/90R46 tires (front 45%, rear 35% remains), Goodyear 650/65R38 (30% remains).

SN: AGCA1300VENS1017 (PA) **U1633**



\$67,000

2013 RBR Vector 350, 4018 hrs., Cummins QSB 8.3L 350 hp diesel engine, Allison 4-speed auto. trans., AxleTech planetary axles, 4WD, painted 409 SS New Leader L3220G4 9T spreader with insert, Raven Viper Pro, AccuBoom, AutoSteer, light bar, A/C, air ride seat, tinted cab, electric roll tarp, front and rear fenders, 380/90R46 Michelin tires (70% remains). Hydraulic hoses replaced.

SN: FA1306108 (PA) **U1624, U1559B**

TRUCKS



\$89,000

2017 Ford F750 Super Duty, 201,185 miles, 6.7L power stroke diesel engine, automatic transmission with PTO provision, 50 gal fuel tank, air brakes, extended cab, 11ft. utility body, 8 drawer tool box, adjustable shelves, power distribution box with hose/reel, 10,000 lb lifting capacity crane, 100 PSI air compressor, back-up alarm, 158 in wheelbase, 22.5 front/rear wheels.

SN: 1FDWF7DC3HDB00714 (PA)

MISC.



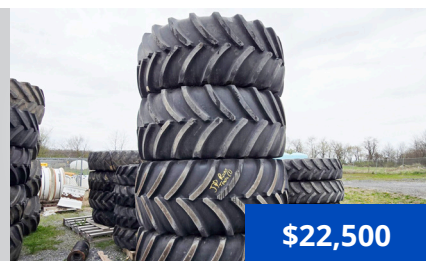
\$3,500

Set of 2 Firestone 650/75R32 floaters tires on 10-bolt rims, will fit any GVM make and model Prowler. (PA) **U1588**



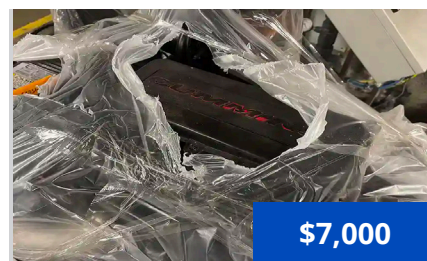
\$17,500

Set of 4 Goodyear 900/50R46 floaters tires (50% remains). (PA) **U1635A**



\$22,500

Set of 4 Goodyear 900/50R46 floaters tires (50% remains). Three sets available. (PA) (OH) **U1593A, U1594A**



\$7,000

2019 Cummins QSL9 Diesel Engine, Used Cummins engine, 6 cylinder, 9L, 350 hp at 2100 rpm. (PA) **U1558**

PART NO.	DESCRIPTION	QTY	PRICE
W38-13300	Rim 38 x 12 11/16 in. offset (front)	2	\$566
W-619060R	Rim W14 x 16.1	2	\$73
42-01160 (PA)	Assy., Dash Panel Electronic 2004	3	\$1,327
117-0138-050	Auto Boom Kits	1	\$9459.21

SPREADERS



\$90,000

2019 GVM Double Duty Air, 3-compartment 72 ft 304SS booms, painted 409 SS, 13'x78 in. wide, 350 cu ft, LH and RH 16 in. SS conveyor chains, SS hopper screens, 72 ft 304SS booms, 27 in. nozzle spacings, break away, 22 in. fan, electric roll tarp with Raven RCM ISO control, Recon SpreadSense, lights and reflector, hydraulic tilt and fold, electric-over-hydraulic controls, rear camera, dual 90cc pumps.

(PA)

STOCK EQUIPMENT